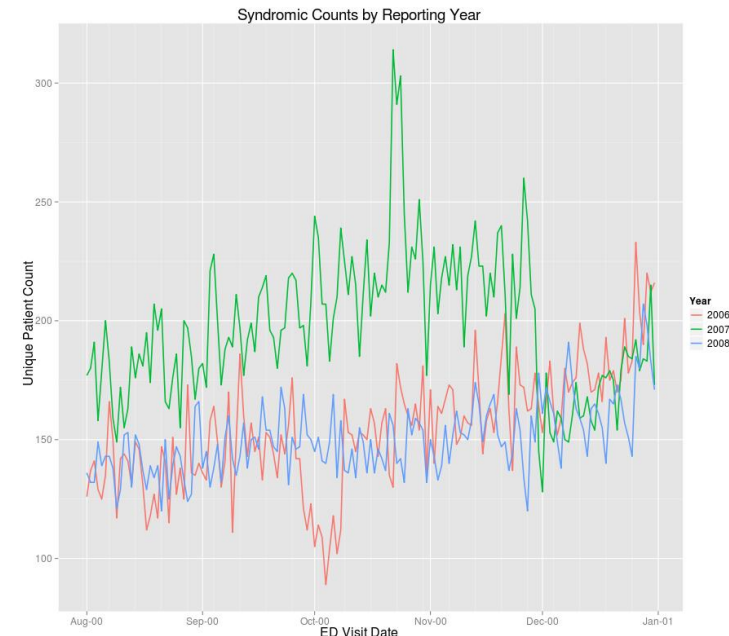
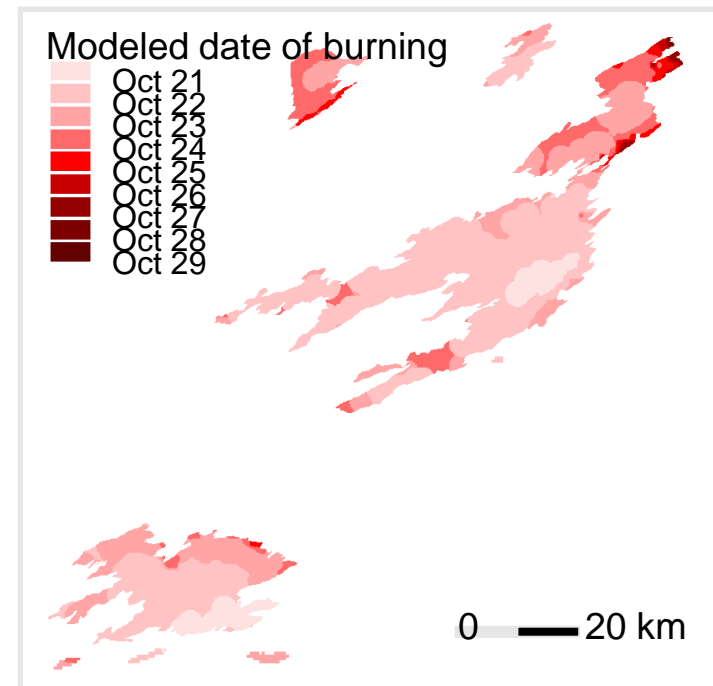


PAST AND PRESENT RESEARCH

- Specialty: satellite remote sensing and geospatial modeling
- Prior medical studies:
 - “Modeling Impacts of Climate-Driven Change in Wildfire Occurrence on Respiratory Health of Population” (San Diego County, CA)
 - “Mapping malaria in Myanmar” (Myanmar)
 - “Physical Activity and built space” (PG County, MD)



SHORT-TERM NEEDS AND INTERESTS

- Bring satellite remote sensing into mainstream medical research:
 - Environmental health applications
 - Spatial modeling of diseases and possible forecasting (e.g. malaria)
 - NEED: a partner in climate change and health outcomes in High Northern Latitudes (Alaska) – for the NASA ABoVE project

LONG-TERM INTERESTS

- Bring satellite remote sensing into mainstream medical research
- Build an interdisciplinary team that is bigger than the sum of its parts
- Achieve world domination in the field of geospatial applications of medical research